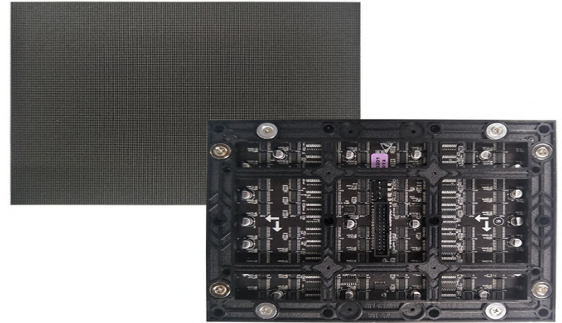


Fine Pitch LED Display

TW11-3216 Series

INTRODUCTION

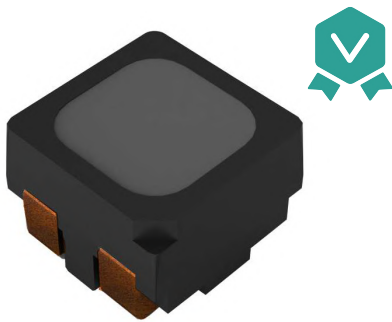
TW11-3216 series offers high-definition visuals perfect for indoor applications. Ideal for corporate lobbies, control rooms, and luxury retail environments, it enhances spaces with stunning clarity and vibrant imagery, ensuring a premium viewing experience for all indoor settings.



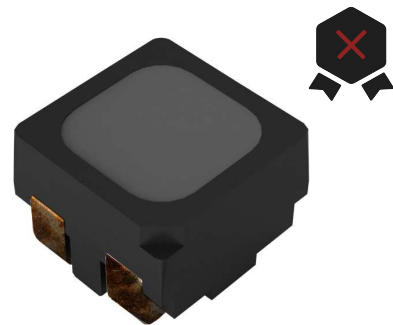
FEATURES INDETAIL

Copper Wire Copper Bracket

The lamp uses copper wire and copper bracket. Compared with the iron bracket, the lamp has a longer service life and is not afraid of rust and corrosion.



Copper wire copper bracket lamp
(iSEMC TW11)

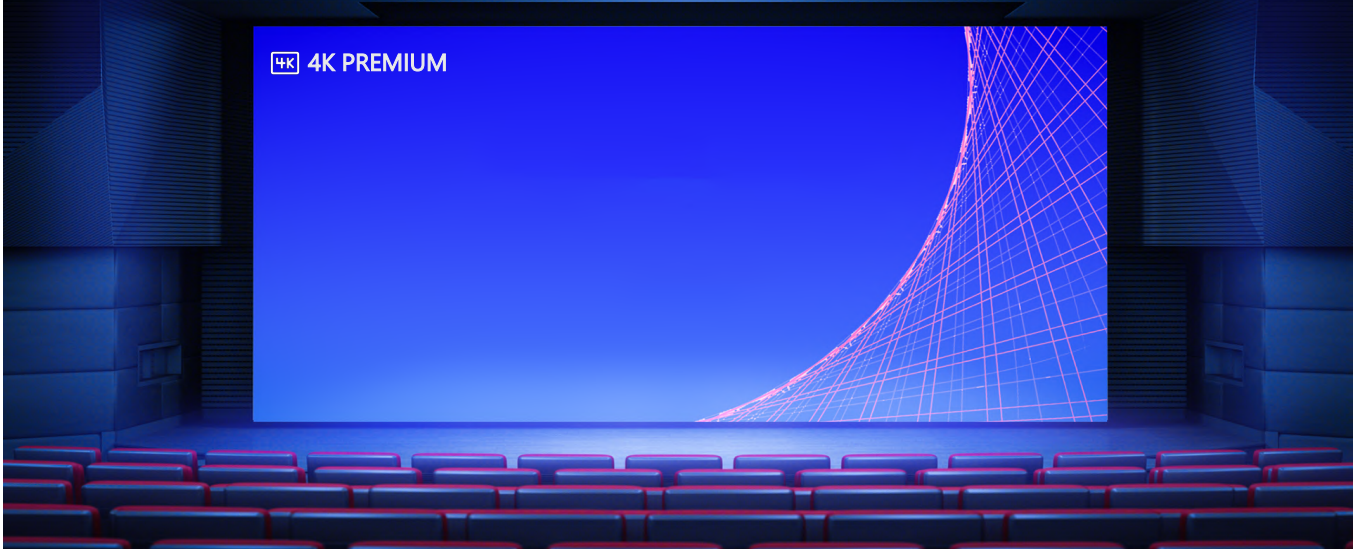


Copper wire iron bracket
(Prone to rust)

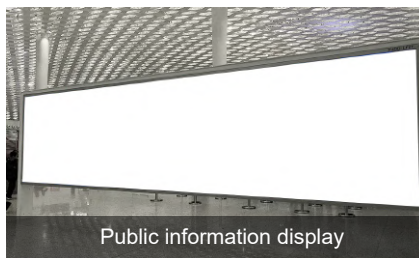
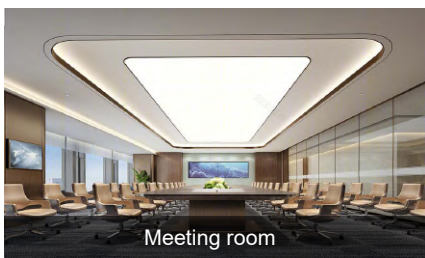
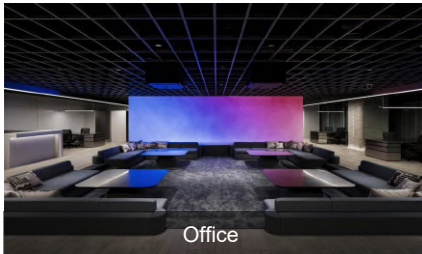
TW11-3216 Series

Easy To Achieve 4K or Higher Resolution

Our fine-pitch LED display offers customizable splicing in any size and direction, supporting various video sources for easy creation of FHD and 4K large screens. Perfect for dynamic visual presentations in corporate, retail, and entertainment settings.



APPLICATION SCENARIOS



SPECIFICATIONS

Product Name	TW11-3216-P1.2	TW11-3216-P1.5	TW11-3216-P1.6	TW11-3216-P1.8	TW11-3216-P2.0	TW11-3216-P2.5	TW11-3216-P3.0	TW11-3216-P4.0
Pixel Pitch(mm)	1.25mm	1.53mm	1.667mm	1.86mm	2.0mm	2.5mm	3.076mm	4.0mm
Pixel Density (Pixels/Sqm)	640000	422500	360000	288906	250000	160000	105625	62500
Input Voltage	5V							
Lamp Type	SMD1010	SMD1212	SMD1212	SMD1515	SMD1515	SMD1515	SMD2121	SMD2121
Module Size	320×160mm							
Module Resolution(mm)	256×128	208×104	192×96	172×86	160×80	128×64	104×52	80×40
Optimum Viewing Distance	1.2m-15m	1.5m-20m	1.5m-20m	1.8m-28m	2.0m-25m	2.5m-30m	3.0m-40m	4.0m-40m
Horizontal Viewing Angle	≥160°							
Vertical Viewing Angle	≥140°							
Max. Power Consumption	32.5w	28.5w	26.5w	24.5w	22.5w	18.5w	17.5w	27.5w
Drive Mode	1/64	1/52	1/48	1/43	1/40	1/32	1/26	1/20
Refresh Rate	3840Hz							
White Balance Brightness	500-600 CD /Sqm							
Weight	0.2kg	0.2kg	0.2kg	0.2kg	0.18kg	0.18kg	0.18kg	0.18kg
Operating Temp(°C)	-20°C~60°C							
Storage Temp(°C)	-25°C~60°C							
Humidity Range	10%~90%, Non-condensing							
Life Time	75,000~100,000hr							