

# Video Wall Controller

## Powerful Video And Image Processing Device

VKI Series

### INTRODUCTION

VKI Series video wall controller is new generation professional image processing product which is based on the development of multi-windows, ultra-high definition and visual display control technology. Compare to other video wall controller in the market, VKI series has upgraded its system capacity to 4K@60hz input and output, so that there is a significant advantage on the processing speed and image display. Meanwhile, VKI series controller supports multiple services, density of I/O interfaces and long term reliability. It is an all-in-one product which has 4K input and output processing, IP-Video Decoding, Monitoring control, Scene preset, Embedded Audio Output, User management and other advanced applications to meet a variety of professional Video and Audio system application requirements.

### FEATURES

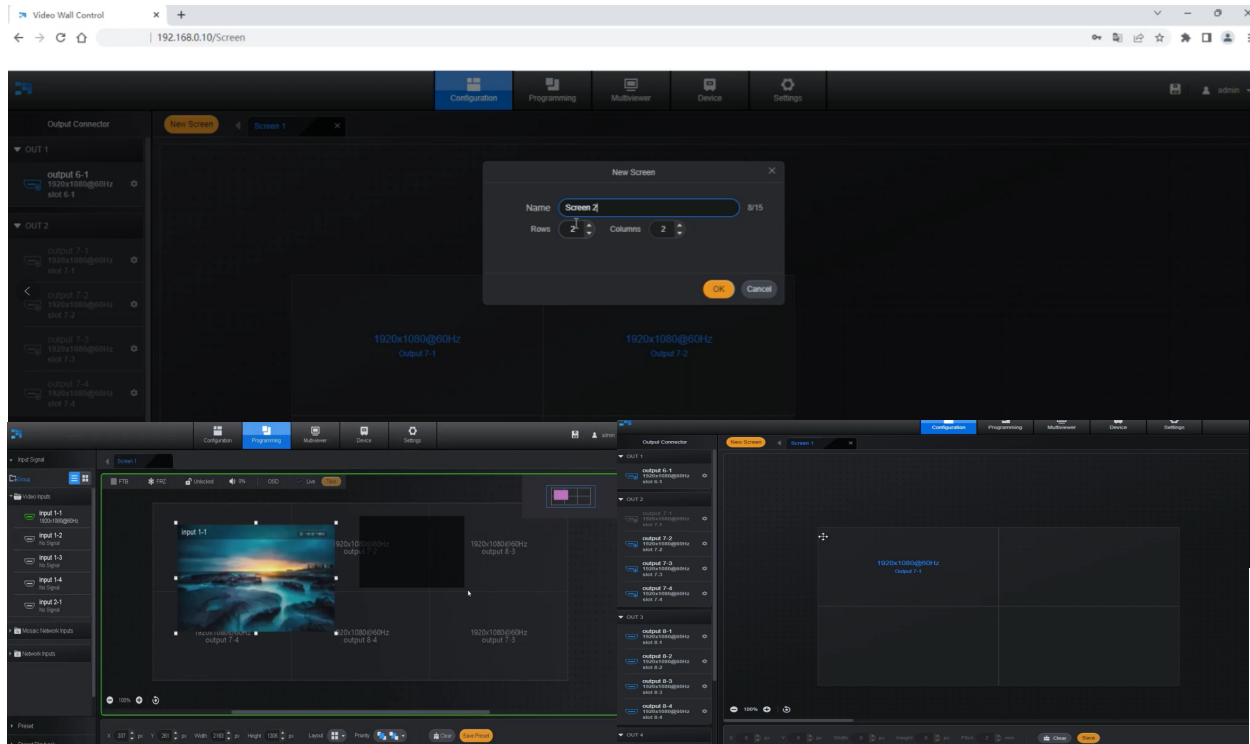
- 4K@60Hz UHD input and output
- Dual control card backup
- Support signal preview and video wall monitoring
- Input and output slot mixing
- Redundant power supply
- Embedded and de-embedded audio out
- One output channel support up to 8 layers
- Web browser control
- Up to 4 groups management
- Scrolling text and background image
- Support 1000 preset and seamless switch
- 4K@30 and 1080P input manually swich
- EDID management, Support LED, up to 8K x 1K output
- Support 90 degree rotation and creative video wall
- Support multi-user online operation



VKI Series

## WEB CONTROL

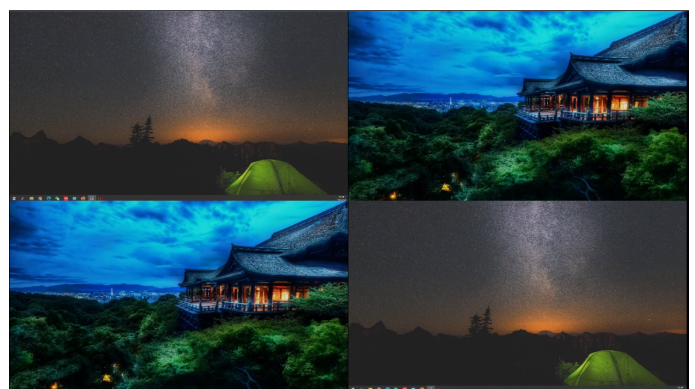
VKI comes with new feature of Web Control. The Web Control provides the properties, methods, and events that are common to PC software control. You can control the appearance and behavior of a Web Control by IP address and support multiple users to control from multiple devices.



## PREVIEW FUNCTION



**Control PC**

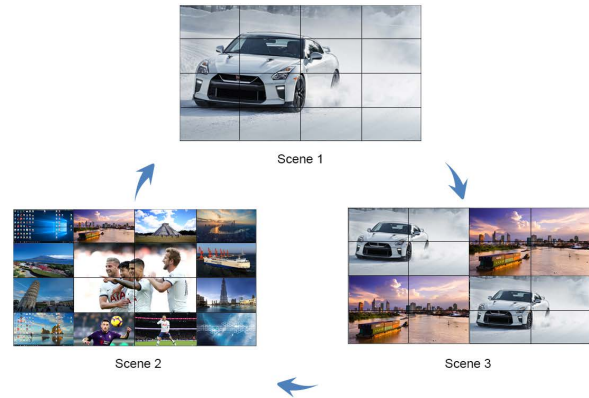


**Videowall**

## RELEVANT FEATURES



- Support 4K@60hz in & Out



- Scene Switching

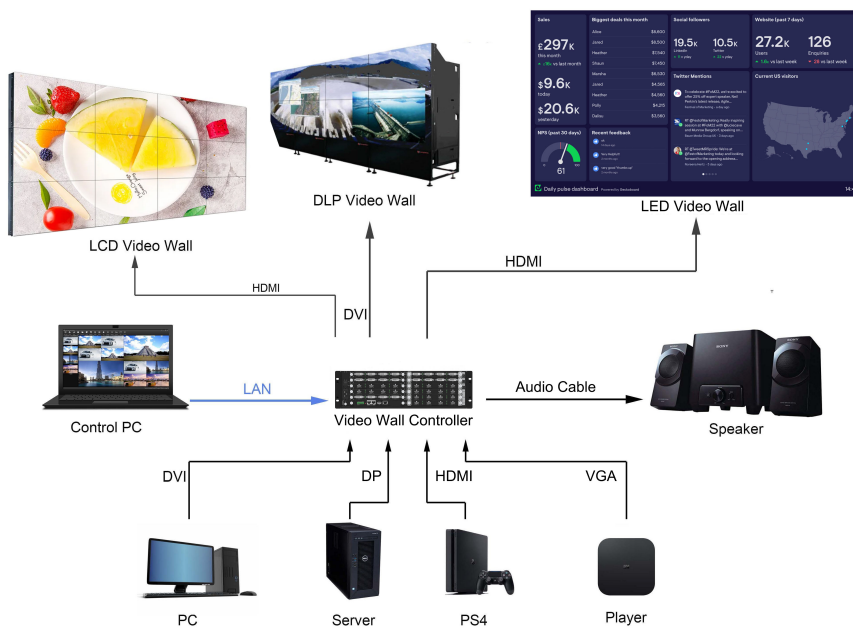


- Embedded And De-embedded Audio Out



- Multi-Group Control

## SOLUTION DIAGRAM



## SPECIFICATIONS

ITEM	VKI-3U	VKI-7U	VKI-14U
Chassis Size	3U	7U	14U
Max Input	32	60	124
Max Output	24	36	72
Product Size (mm)	480×140×350	482.6×348.8×317.3	482.6×393.0×638.5
Net Weight (kg)	7.7	14.8	27.7
Gross Weight (kg)	13.5	18.7	34.6
Maximum Input Resolution	8192×1080@60Hz 3840×2160@60Hz	8192×1080@60Hz 3840×2160@60Hz	8192×1080@60Hz 3840×2160@60Hz
Power Supply	100–240V~,50/60Hz	100–240V~,50/60Hz	100–240V~,50/60Hz
Power Consumption	150W	320W	800W
Operating Temperature	0°C~45°C		
Irregular Splicing	Support	Support	Support
Screen Grouping	4	4	4
Maximum Number Of Decodes	512	900	1984
Maximum Support Layer	48	72	144
Network Port Transmission	Support	Support	Support
Preview Echo	Support	Support	Support
Double Master Control Backup	Support	Support	Support
Alternate Power Supply	Not Support	Support	Support
Supported Input Daughter Cards	DVI, HDMI, DP1.2, HDMI2.0, VGA, IP decoding card, central control card		
Supported Output Daughter cards	DVI, HDMI, HDMI1.4, HDMI2.0, network port video output daughter card, preview echo		