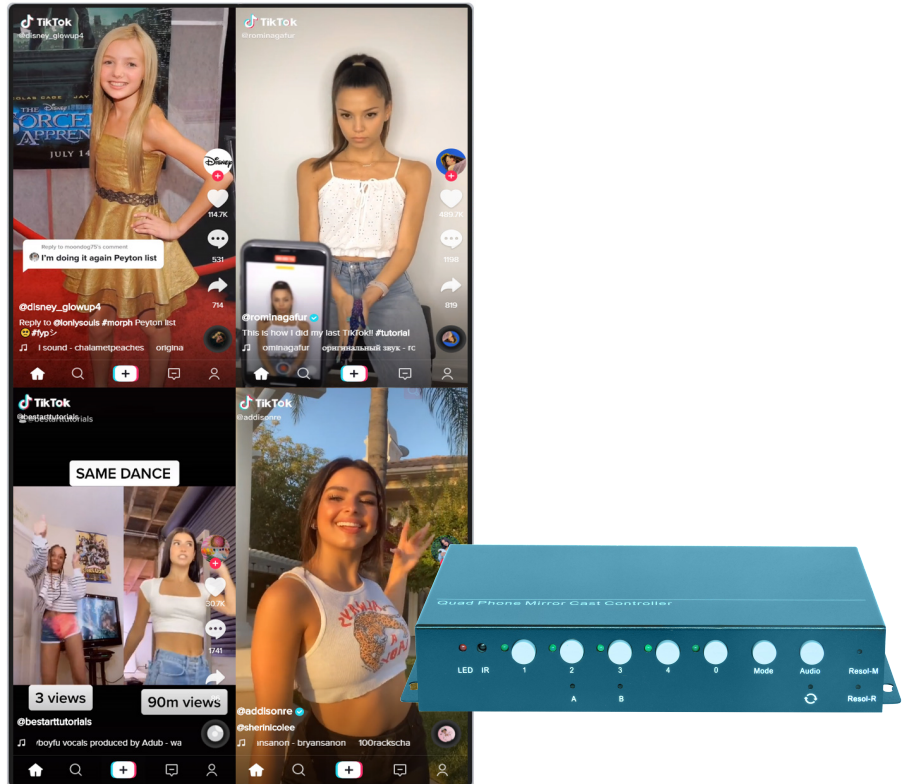


Multiviewer With MHL

TM Series



INTRODUCTION

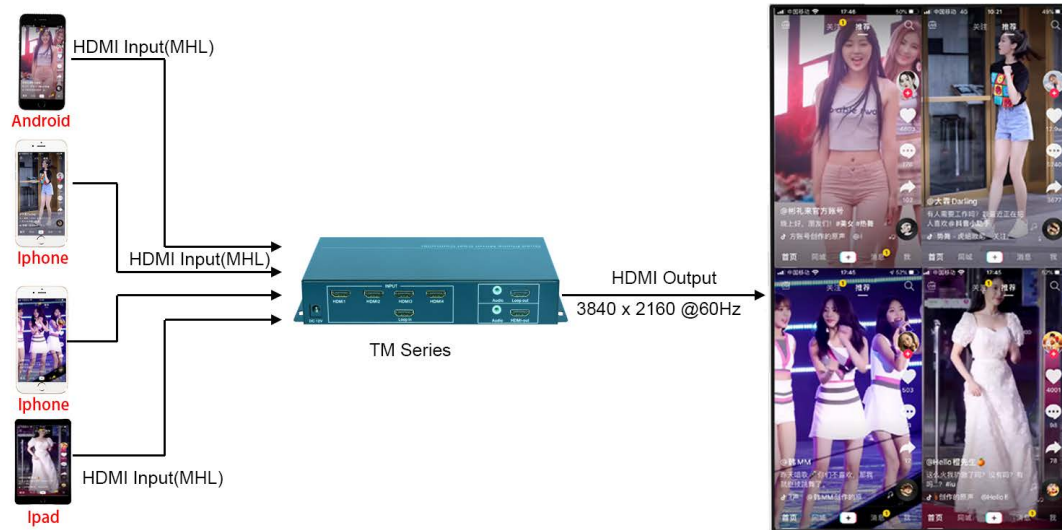
TM is a multiviewer 4 channels input and 1 channel output with MHL. The main function is to convert the 4 x HDMI signals input to multiviewer into single HDMI signal output, so that 4 digital signals are displayed on a UHD display unit at the same time. And MHL supports connecting to mobile phone display, suitable for live broadcast industry, advertising industry and so on.

FEATURES

- Support 4 x HDMI(MHL) inputs;
- Support 1 x HDMI signal output;
- The input resolution is up to 3840 x 2160@60Hz, and the output is up to 3840 x 2160@60HZ, which is backward compatible; Support PIP ,Vertical screen display;
- One-click screenshot function;
- Support image rotation of 90 degrees and 270 degrees;

TM Series

DIAGRAM



SPECIFICATION

Product Hardware Information	System structure	Pure hardware architecture
	Operating system	No operating system
Input/Output Signal	Input interface	4 x HDMI2.0
	Input resolution	Up to 3840 x 2160@60Hz
	Output interface	1 x HDMI2.0, 2 x 3.5mm audio interface
	Output resolution	Up to 3840 x 2160@60Hz
Image Processing	Color	24bit, 16.77 million colors
	Splicing mode	1 x 2, 2 x 2, Single signal full screen...
Control	Control method	Chassis keys, remote control
Stability	Safety	Hardware Structure, no virus interference
	Continuity	365 days, 7 x 24 hours operation
Electrical Parameters	Voltage	DC 12V
	Power	<10W
Package	Product size	199mm(L) x 119mm(W) x 39mm(H)
	Product weight	0.7KG
	Package size	290mm(L) x 210mm(W) x 139mm(H)
	Gross weight	1.9KG