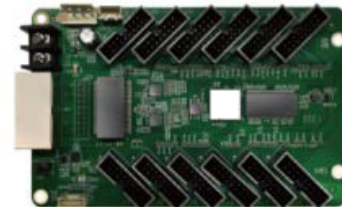


# LED Control System

## MRC 08&12 Receiving Card

### INTRODUCTION

MRC08&12 receiving card is a specially introduced high cost-effect product of Colorlight, which is designed for customers to save cost, reduce points of fault and failure rate. MRC08&12 single card can load up to 192x1024 pixels, support up to 24 groups of parallel data or 32 groups of serial data. Based on the technical advantages of conventional receiving cards, MRC08&12 can be integrate into HUB75 interfaces, which is more reliable and more economical on the premise of ensuring high-quality display



### FEATURES

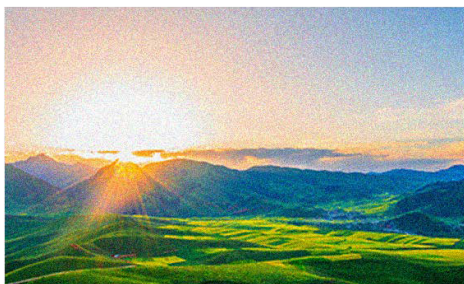
- 8bit video source input
- Color temperature adjustment.
- 240Hz frame rate.
- Grayscale is better at low brightness.
- Pixel-to-pixel calibration of luminance and chrominance.
- Highlights and OSD.
- The screen rotates.
- Data group offset.
- Any pump row, any pump column and any pump point.
- Fast firmware upgrade and quick release of correction coefficients
- Loop redundancy.
- Ethernet cable status monitoring
- Firmware program redundancy and readback.
- 24/7 non-stop work

**MRC 08&12**

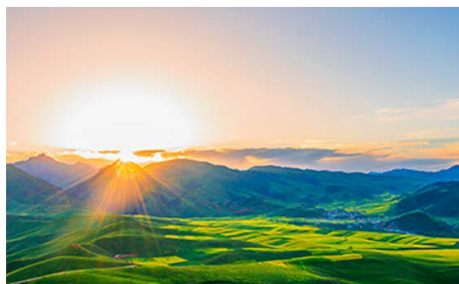
## RELEVANT FUNCTION INDICATION

### Brightness and chroma calibration

Effectively eliminating the color difference between pixels, achieve whole screen color and brightness uniformity and consistency. Improve overall display quality.



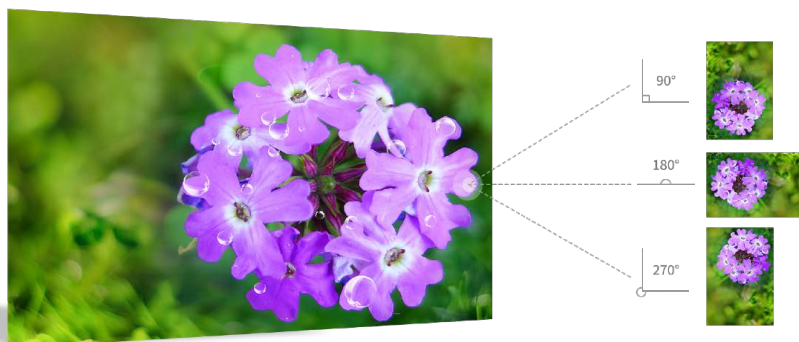
Before



After

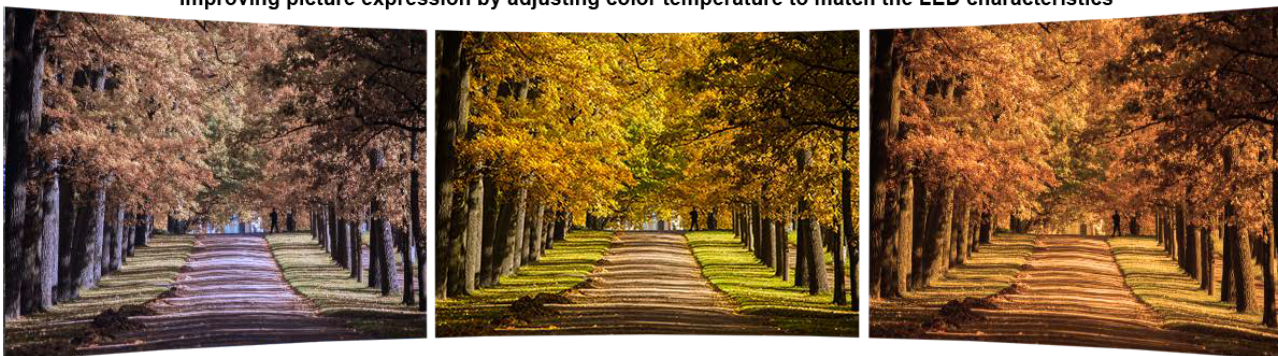
### Cabinet image rotation

Cabinet image rotates at 90°/180°/270°

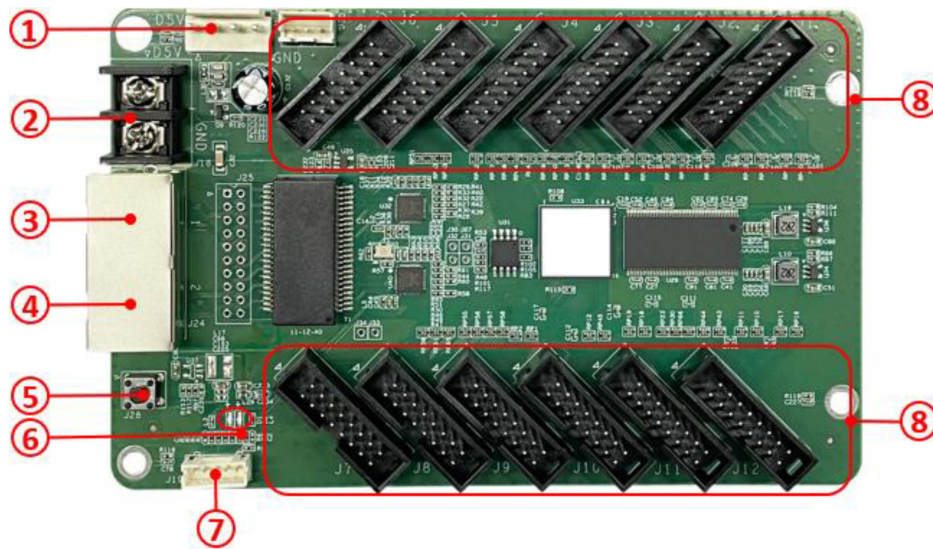


### Adjustable color temperature

Improving picture expression by adjusting color temperature to match the LED characteristics



## Hardware Interface



### Interface

S/N	Name	Function
1	Power 1 Power2 Network port A	Connect to DC 3.8V~5.5V power supply for the receiving card, only use one of them.
2		
3		RJ45, for transmitting data signals, dual network ports can enter and exit at will, and the system will automatically identify.
4	Network port B	The attached test procedures can achieve four kinds of monochrome display (red, green, blue and white), as well as horizontal, vertical and other display scan modes.
5	Test button	
	Power indicator light DI	Red indicator light shows that the power supply is normal. Flashes once per second Receiving card: normal working, Ethernet cable connection: normal.
6	Signal indicator D2	Flashes 10 times per second Flashes 4 times per second Receiving card: normal working, Cabinet: Highlight. Receiving card: back up sender cards (Loop redundancy status).
7	External interface	For indicator light and test button.
8	HUB pins	HUB75 Interface, J1~J12 connected to display modules.

\* The product photos in this article are for reference only, and only the actual purchase shall prevail.

## SPECIFICATIONS

Model	MRC 08	MRC 12
Loading Capacity	192×1024	128×1024
Data Interface	HUB75	
Data Group	24	16
Color Depth	8bit	
Dynamic Frame Rate	23.976~120Hz	
Calibration Accuracy	8bit	
Low Latency	√	√
Color Temperature Adjustment	√	√
Better Grayscale At Low Brightness	√	√
Automatic Highlight And OSD	√	√
Loop Backup	√	√
Irregular Design	√	√
Network Cable Detection	√	√