

Security Operations Center (SOC)



Project brief introduction

Our SOC's provide you with the capability of round-the-clock protection for your private property or public facilities. It comes with high-resolution video display units constructed for extended duty cycles. Our display solutions offer you flexibility, and they are compatible with a range of sources.

Description

Complete Situational Overview 01

To give you continuity in your operations, you need to detect all potential threats and security issues as they arise. iSEMC's SOC visualization and collaboration solutions enable you to maintain control of your enterprise 24/7. Our solutions provide you with a complete situation overview, including site security, response-steering, threat intelligence collection, and cyber attack prevention.

Threat Reduction 02

Keeping your organization free from threats is crucial, and an iSEMC visualization and collaboration solutions will help you achieve this. It will enhance your decision-making, giving you high-quality imagery on which to base critical decisions. iSEMC can provide you with an LCD, LED, or a rear-projection video wall depending on your needs. We will provide it at a cost-effective price, and it will serve your organization well for many years.

Fast Response and Resolution 03

Your ability to respond quickly and effectively to a security incident will be the determining factor in whether you can resolve that issue. You need to have the correct information presented appropriately. iSEMC's visualization solutions allow you to collect and display security information and incident data in real-time and in a workspace that fits your needs. You'll have access to all the information you need from a single terminal, even from disparate secured networks. The speed of response this affords you is critical.

Control Room Collaboration 04

iSEMC solutions offer you the facility to safely share video and other data across your organization, both internally and outside your control room. Whether consulting with remote decision-makers or communicating with response teams in the field, iSEMC visualization and collaboration solutions will give you the situational awareness you need.

Control Room

Solutions

Features

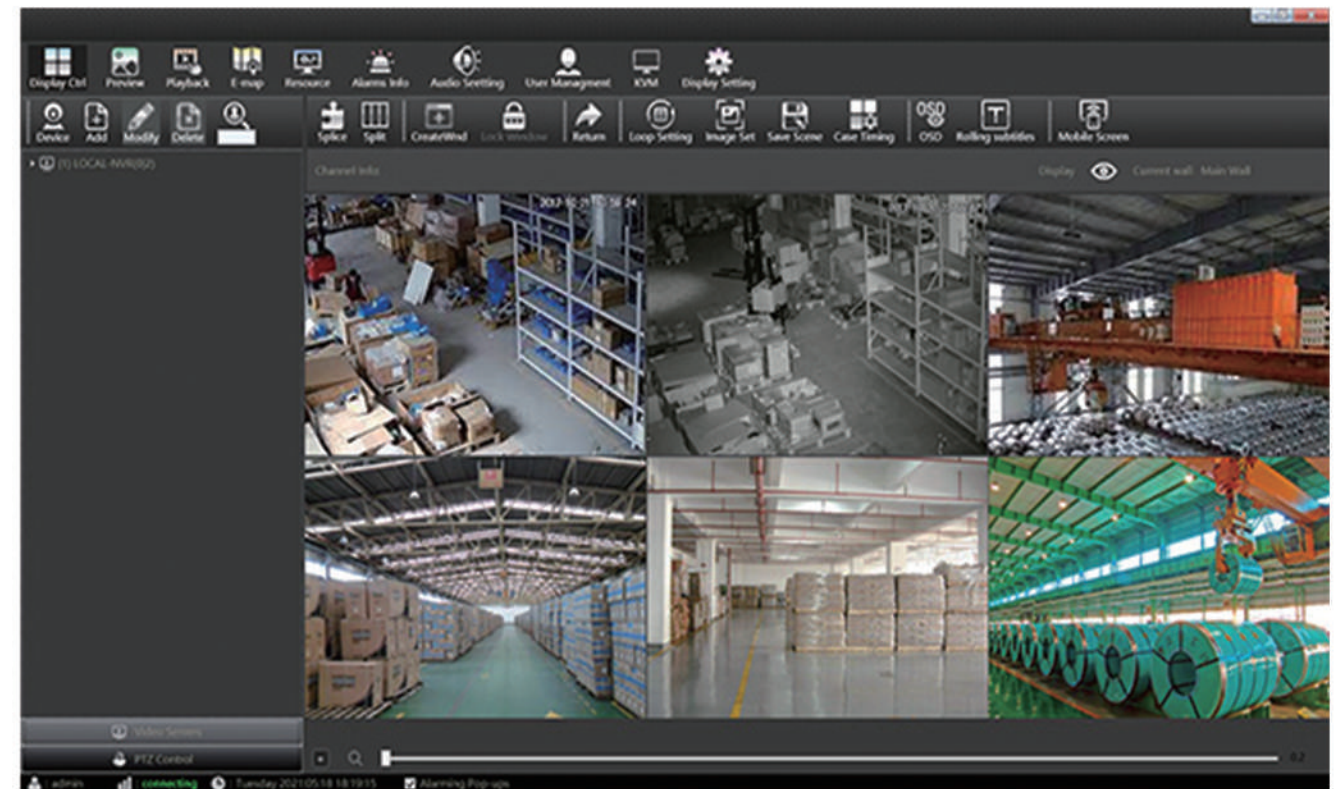


Real-time video monitoring

According to the different monitoring demand, location and corresponding deployment scenarios, the front camera can be connected to the monitoring platform through the network. When we meet large amount of data, 24 hour uninterrupted supervision will be managed by disk array storage and real-time monitoring. The control program of scheduling system for all types of data is the key to the dispatching work, video wall display system continuously work for 7x24 hours, to ensure the timeliness of the scheduling and control.

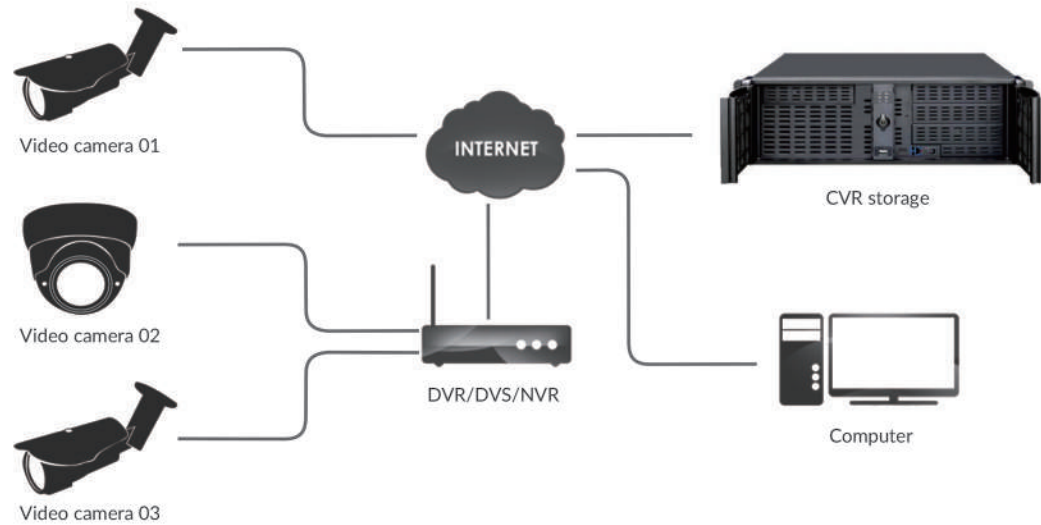
Visual display

All systems will be presented in related ways, such as pictures, data, video, software interface, which are more intuitive and vivid.



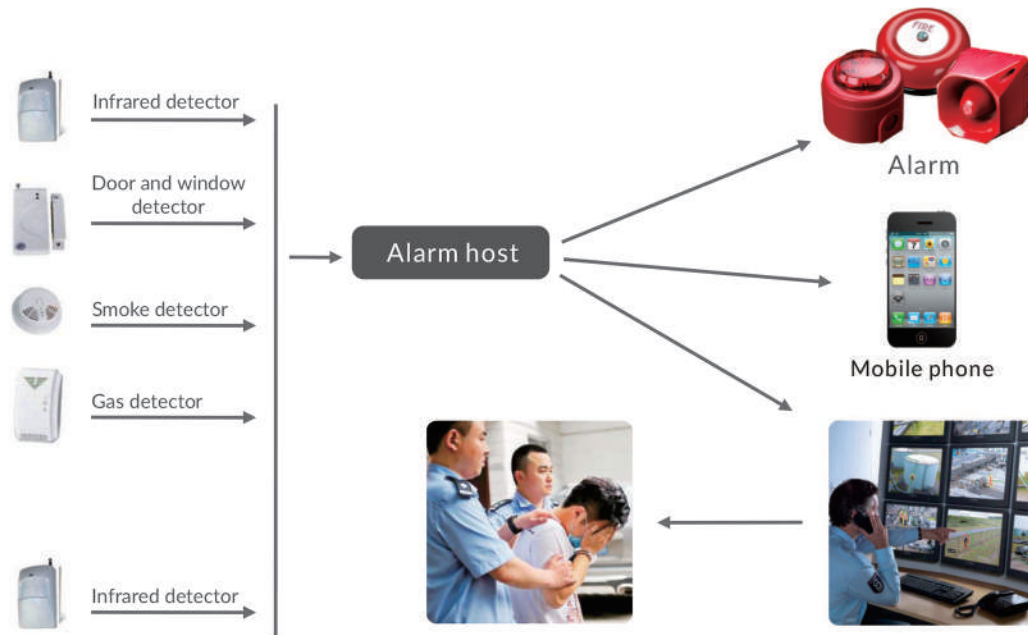
Remote storage

The system supports image transmitting function, when multiple users request real time viewing at the same time on the same image camera, it uses media server to realize real-time transmission of image flow, reduces video bandwidth occupied by monitoring system at the same point, avoid network congestion caused by internal business disruptions.



Linkage alarm

After installing infrared detector in the front-end and accessing to the backend alarm host which is connected with sound and light alarm, once the illegal intrusion is detected, alarms will be sent out, and a series of linkages will be launched according to settings, when various types of alarms are generated, all alarm information will be collected at the business client side. Planning and on-site scene of each alarm linkage can be managed via the alarming interface, finally all kinds of alarm information will do classified statistics through the alarm information statistics, and linkage can be generated with video equipment simultaneously, to transfer live video to the display terminal in real time which can realize the alarm linkage function.

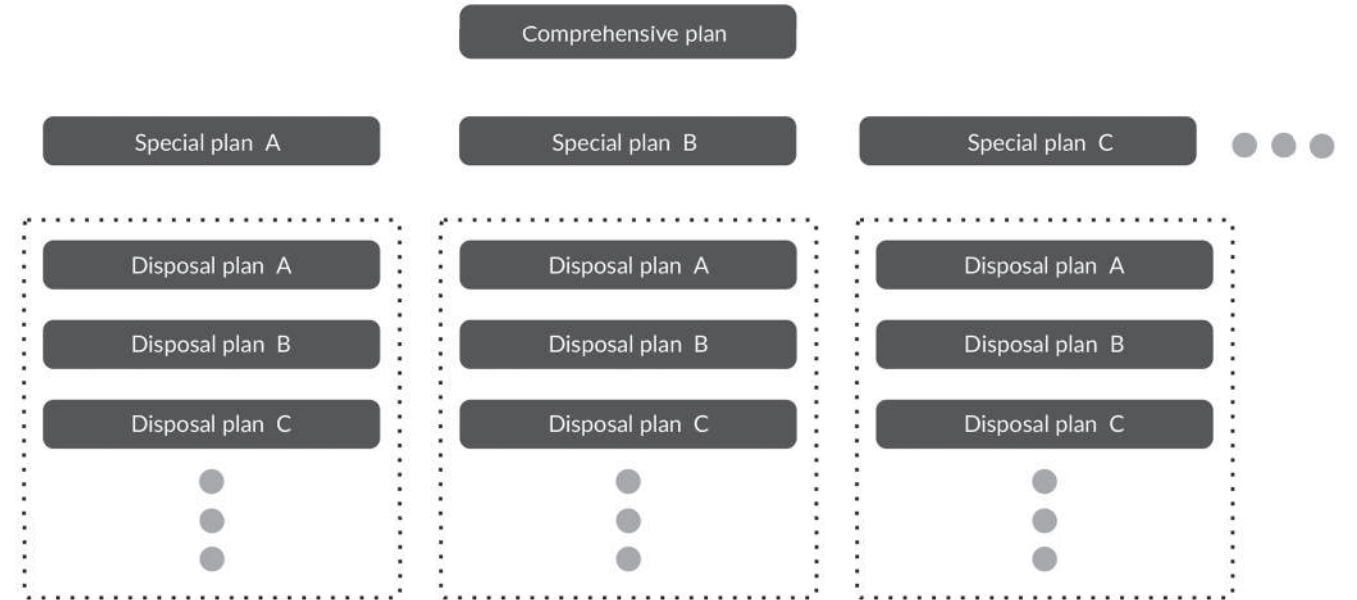


Control Room

Solutions

Preset management

The research and development of contingency plans can be carried out via an integrated security management platform, to realize input and linkage settings of various contingency plans. A resource directory can be formed through the abstraction of pre-arranged data elements and information resources. The integrated security management platform can be automatically associated with the corresponding contingency plans in the event of different police information. This is more convenient to help the management to make decision.



Electronic map

Support 3D multilayer electronic map; easily define the monitoring points and the alarm points on the map; support zoom map; alarm can be displayed in the relevant locations on the map when alarming; view scene images and make PTZ control by clicking on the alarm icon.



Decision-making Support

Decision-making support collects information for HD display system: all kinds of information collected and arranged by the system, plus of analysis calculation results of various models are shown in the most simple and intuitive form according to the needs of the decision makers, to help decision makers quickly and accurately understand the current situation, analyze the pros and cons of various scheduling schemes, as well as help them better to make the right decisions.

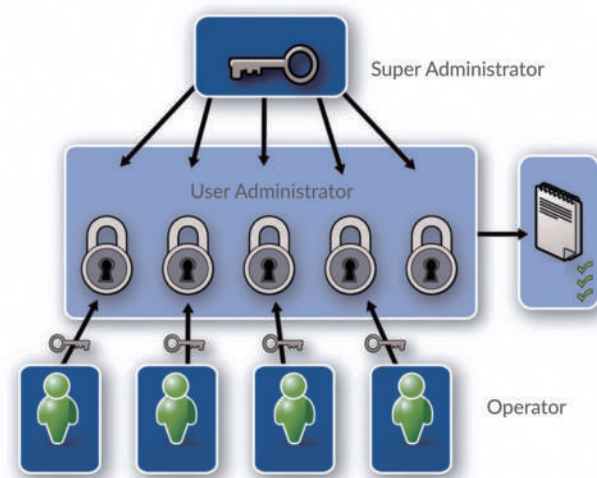


Conduct Investigation of Cases Based On Video

Greatly improve the efficiency of video viewing through intelligent applications, such as video concentrating, abstract and retrieval; recover the blurred image to let the image details and characteristics more clearly through image enhancement, image restoration and other intelligent image processing technologies, to provide the actual security service.

User Privilege Management

User management supports various users, such as super administrator, user administrator and operator. Different users can be assigned different permissions for managing subsystem and equipment control configuration

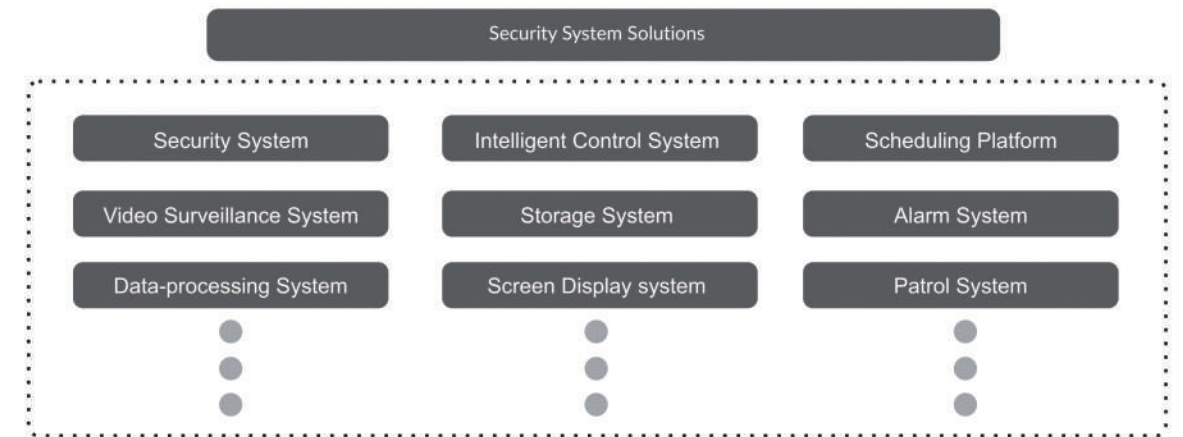


Control Room

Solutions

Simplify Operation System

Multiple systems can be connected into single system to realize multiple systems docking, centralized management and control can simply complex systems.



Ultra high definition display

Appropriate designs can be made according to the project's real needs; the display system, mainly composing DID screen, DLP splicing screen, LED display screen with little space, the system can support multiple 1080P HD input sources and max input resolution supports up to 3840x2160@60Hz. Single channel max output resolution supports up to 3840x2160@60Hz. it also supports high resolution background map,



High practicability

Possess a variety of management methods according to the characteristics of practical applications. Graphical management interface and the system design meets the actual engineering needs. The system configuration emphasizes advantage and practicability, as well as the economic effects of the system configurations, to achieve the comprehensive balance.

High compatibility

iSEMC video wall display system is compatible with peripherals or other peripheral platform of the video wall system; seamless connection for control, transmission and display can be realized.

Stable and reliable

The system is stable and reliable because of adopting mature technologies, not infected with the virus; it has been successfully applied to a number of projects, with mature project experience.



Application industry



Public Safety



Security Operations Center



Security Center

Control Room